



Harmont & Blacque
ENGLAND

Otoño/
Invierno

2021



+54 9 11 6392-4267



@harmontblacke
_indumentaria



/harblacke



A misty forest landscape with a brown banner across the middle containing the text 'SWEATERS CUELLO REDONDO'. The background shows a dense forest of evergreen trees under a hazy, overcast sky. The banner is a solid, muted brown color, and the text is in a white, serif font.

SWEATERS CUELLO REDONDO



**MUESTRA
TESTIGO A
ART: I21-5101SW**

Cuello redondo

FIBRA: ALGODÓN 100% PEINADO
DETALLE: COLORES LISOS
TEJIDO: JERSEY MENGUADO
FINURA:GG12
TEXTURA:FINA

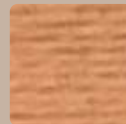
TALLES:

S-M-L-XL-XXL

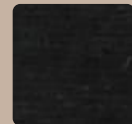


100% ALGODÓN

CARTA DE COLORES 1



CAMEL
2742



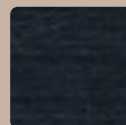
NEGRO
2820



ROJO
2339



PETROLEO
2646



MARINO
2550



**MUESTRA
TESTIGO A
ART: I21-5102SW**

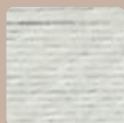
Cuello redondo

FIBRA: ALGODÓN 100% PEINADO
DETALLE: COLORES
MOULINADOS
TEJIDO: JERSEY MENGUADO
FINURA:GG12
TEXTURA:FINA

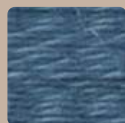
**TALLES:
S-M-L-XL-XXL**



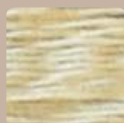
CARTA DE COLORES 2



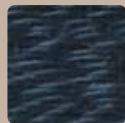
MARFIL
88062



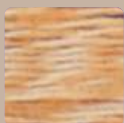
AERO
82545



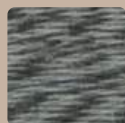
BEIGE CLARO
82730



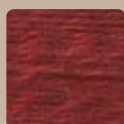
MARINO
82550



CAMELO
88040



GRIS MEDIO
83815



BORDO
84328



CARBON
82820



**MUESTRA
TESTIGO A
ART: I21-6101SW**

Cuello redondo

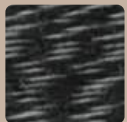
FIBRA: ALGODÓN 100% PEINADO
DETALLE: COLORES MOULINADOS
TEJIDO: JERSEY MENGUADO
FINURA: GG12
TEXTURA: FINA

**TALLES:
S-M-L-XL-XXL**

CARTA DE COLORES 2



GRIS MEDIO
83815



CARBON
82820





**MUESTRA
TESTIGO A
ART: I21-6102SW**

Cuello redondo

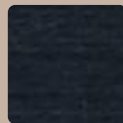
FIBRA: ALGODÓN 100% PEINADO
DETALLE: COLORES LISOS Y
MOULINADOS
TEJIDO: JERSEY Menguado
FINURA: GG12
TEXTURA: FINA

**TALLES:
S-M-L-XL-XXL**

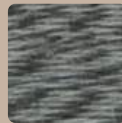


CARTA DE COLORES

1 Y 2



MARINO 2550
GRIS CLARO 89038



NEGRO 2820
GRIS MEDIO 83815



**MUESTRA
TESTIGO A
ART: I21-6103SW**

**Cuello redondo
con coderas de
gamuza**

FIBRA: ALGODÓN 100% PEINADO
DETALLE: COLORES MOULINADOS
TEJIDO: JERSEY MENGUADO
FINURA:GG12
TEXTURA:FINA

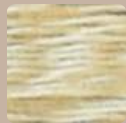
**TALLES:
S-M-L-XL-XXL**



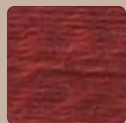
Harmont & Blaine
SINCE 1890

100% ALGODÓN

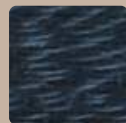
CARTA DE
COLORES 2



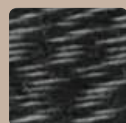
BEIGE 87056



BORDO 84328



MARINO 82550



CARBON 82820





**MUESTRA
TESTIGO A
ART: I21-6104SW**

Cuello redondo

FIBRA: ALGODÓN 100% PEINADO
DETALLE: COLORES LISOS
TEJIDO: JERSEY MENGUADO
FINURA: GG12
TEXTURA: FINA

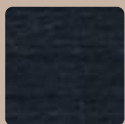
TALLES:
S-M-L-XL-XXL



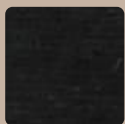
Harmont & Blaine
ENGLAND

100% ALGODÓN

CARTA DE COLORES 1



MARINO 2550



NEGRO 2820



**MUESTRA
TESTIGO A
ART: I21-6105SW**

Cuello redondo

FIBRA: ALGODÓN 100% PEINADO
DETALLE: COLORES MOULINADOS
TEJIDO: JERSEY MENGUADO
FINURA: GG12
TEXTURA: FINA

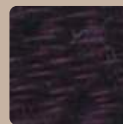
**TALLES:
S-M-L-XL-XXL**



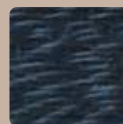
Harmont & Blacke
1858-1900

100% ALGODÓN

CARTA DE COLORES 2



OBISPO 87820



MARINO 82550



**MUESTRA
TESTIGO D
ART: I21-6106SW**

Cuello redondo

FIBRA: LANA 50%-ACRILICO 45%-
POLIAMIDA 5%

DETALLE: COLORES MOULINADOS

TEJIDO: JERSEY MENGUADO

FINURA:GG8

TEXTURA: GRUESA

TALLES:

S-M-L-XL-XXL

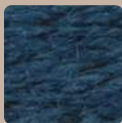


LANA 50%

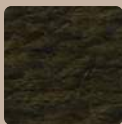
ACRILICO 45%

POLIAMIDA 5%

Carta de colores 4



AERO 1508



AFRICA 1911





MUESTRA TESTIGO I
ART: I21-6107SW

Cuello redondo

FIBRA: ACRILICO 75% - VISCOSA 25%
DETALLE: COLORES MELANGE
TEJIDO: JERSEY MENGUADO
FINURA:GG7
TEXTURA: GRUESA

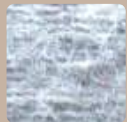
TALLES:
S-M-L-XL-XXL



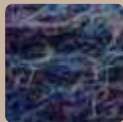
Harmont & Blaine
EST. 1983

ACRILICO 75% - VISCOSA
25%

CARTA DE COLORES 9



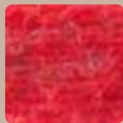
GRIS CLARO



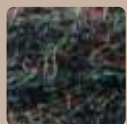
MARINO



CARBÓN



ROJO



MUSGO



MUESTRA TESTIGO D
ART: I21-6108SW

Cuello redondo

FIBRA: LANA 50%-ACRILICO 45%-
POLIAMIDA 5%
DETALLE: COLORES MOULINADOS
TEJIDO: JERSEY MENGUADO
FINURA:GG8
TEXTURA: GRUESA

TALLES:

S-M-L-XL-XXL

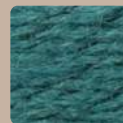


LANA 50%-ACRILICO 45%-
POLIAMIDA 5%

Carta de colores 4



ARENA 1508



PETROLEO 2476



**MUESTRA TESTIGO D
ART: I21-6109SW**

**Cuello redondo con
coderas de gamuza**

FIBRA: LANA 50%-ACRILICO 45%-
POLIAMIDA 5%

DETALLE: COLORES MOULINADOS

TEJIDO: JERSEY MENGUADO

FINURA:GG8

TEXTURA: GRUESA

TALLES:

S-M-L-XL-XXL

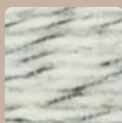




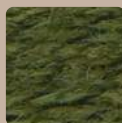
Harmont & Blaine
ENGLAND

LANA 50%-ACRILICO 45%-
POLIAMIDA 5%

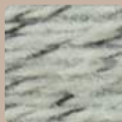
CARTA DE COLORES 4



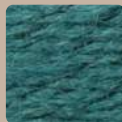
TIZA 1127



MUSGO 2343



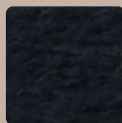
GRIS 1114



PETROLEO 2476



ARENA 1508



NAVY 171218



ROSA 2009



**MUESTRA TESTIGO A
ART: I21-6111SW**

**Cuello redondo con
coderas de gamuza**

FIBRA: ALGODÓN 100% PEINADO
DETALLE: COLORES LISOS
TEJIDO: JERSEY REVES MENGUADO
FINURA: GG12
TEXTURA: FINA

TALLES:
S-M-L-XL-XXL



100% ALGODÓN



CARTA DE COLORES 1



MARINO 2550 CON TOPO 2817



MARINO 2550 CON UVA 2410



NEGRO 2820 CON MARRON 2772



**MUESTRA TESTIGO A
ART: I21-6112SW**

Cuello redondo

FIBRA: ALGODÓN 100% PEINADO
DETALLE: COLORES LISOS
TEJIDO: JERSEY MENGUADO INTARZIA
FINURA: GG12
TEXTURA: FINA

TALLES:

S-M-L-XL-XXL



Harmont & Blaine
EST. 1983

100% ALGODÓN

CARTA DE COLORES 1



AERO 2545 CON MARINO 2550



NEGRO 2820 CON HABANO 2711







SWEATERS ESCOTE V





**MUESTRA
TESTIGO A
ART: I21-5201SW**

Cuello escote V

FIBRA: ALGODÓN 100% PEINADO
DETALLE: COLORES LISOS
TEJIDO: JERSEY MENGUADO
FINURA:GG12
TEXTURA:FINA

**TALLES:
S-M-L-XL-XXL**



Harmon & Blacke
ENGLAND

100% ALGODÓN

CARTA DE COLORES 1



CAMEL 2742



PASTEL 2571



NEGRO 2820



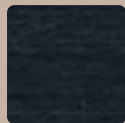
ROJO 2339



FRANCIA 2517



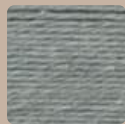
BENETTON
5628



MARINO 2550



PETROLEO
2646



GRIS MEDIO 2815



**MUESTRA
TESTIGO A
ART: I21-5202SW**

Cuello escote V

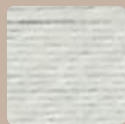
FIBRA: ALGODÓN 100% PEINADO
DETALLE: COLORES
MOULINADOS
TEJIDO: JERSEY MENGUADO
FINURA: GG12
TEXTURA: FINA

**TALLES:
S-M-L-XL-XXL**

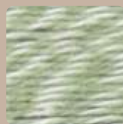


100% ALGODÓN

CARTA DE COLORES 2



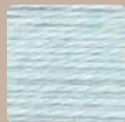
MARFIL 88062



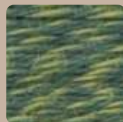
MALVA 82648



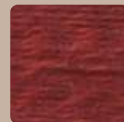
CAMELO 88040



CELESTE 82500



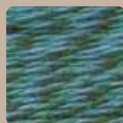
OLIVA 82646



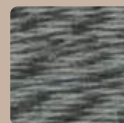
BORDO 84328



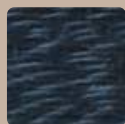
AMARILLO 82138



PETROLEO 88546



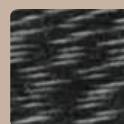
GRIS MEDIO 83815



MARINO 82550



BEIGE 87056



CARBON 82820



**MUESTRA
TESTIGO A
ART: I21-6201SW**

Cuello escote V

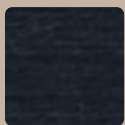
FIBRA: ALGODÓN 100% PEINADO
DETALLE: COLORES LISOS
TEJIDO: JERSEY MENGUADO
FINURA: GG12
TEXTURA: FINA

**TALLES:
S-M-L-XL-XXL**

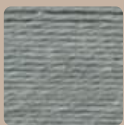
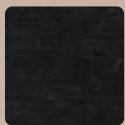


100% ALGODÓN

CARTA DE COLORES 1



MARINO 2550 - AERO 2545



NEGRO 2820 - TOPO 2817





**MUESTRA
TESTIGO A
ART: I21-6202SW**

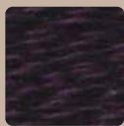
Cuello escote V

FIBRA: ALGODÓN 100% PEINADO
DETALLE: COLORES BASE MOULINE
TEJIDO: JERSEY MENGUADO
INTARZIA
FINURA:GG12
TEXTURA:FINA

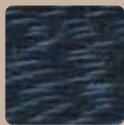
**TALLES:
S-M-L-XL-XXL**



CARTA DE COLORES 2



OBISPO 87820



MARINO 82550



CARBON 82820





**MUESTRA TESTIGO A
ART: I21-6203SW**

**ESCOTE V CON CODERAS DE
GAMUZA**

FIBRA: ALGODÓN 100% PEINADO
DETALLE: COLORES MOULINADOS
TEJIDO: JERSEY MENGUADO
FINURA: GG12
TEXTURA: FINA

TALLES:
S-M-L-XL-XXL

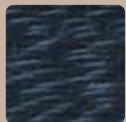


CON CODERAS DE GAMUZA

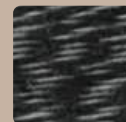
CARTA DE COLORES 2



BEIGE 87056



MARINO 82550



CARBON 82820



MUESTRA TESTIGO C
ART: I21-6204SW

ESCOTE V

FIBRA: ALG. 40%-VISC.40%-
ELASTANO 10%-NYLON 10%
DETALLE: COLORES LISOS Y
MELANGE

TEJIDO: JERSEY MENGUADO

FINURA:GG12

TEXTURA:FINA

TALLES:

S-M-L-XL-XXL



ELASTIZADO

CARTA DE COLORES 3



PIEDRA



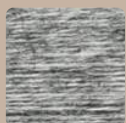
ROSA VIEJO



GRIS CLARO



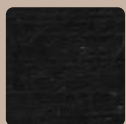
ROJO



GRIS MEDIO



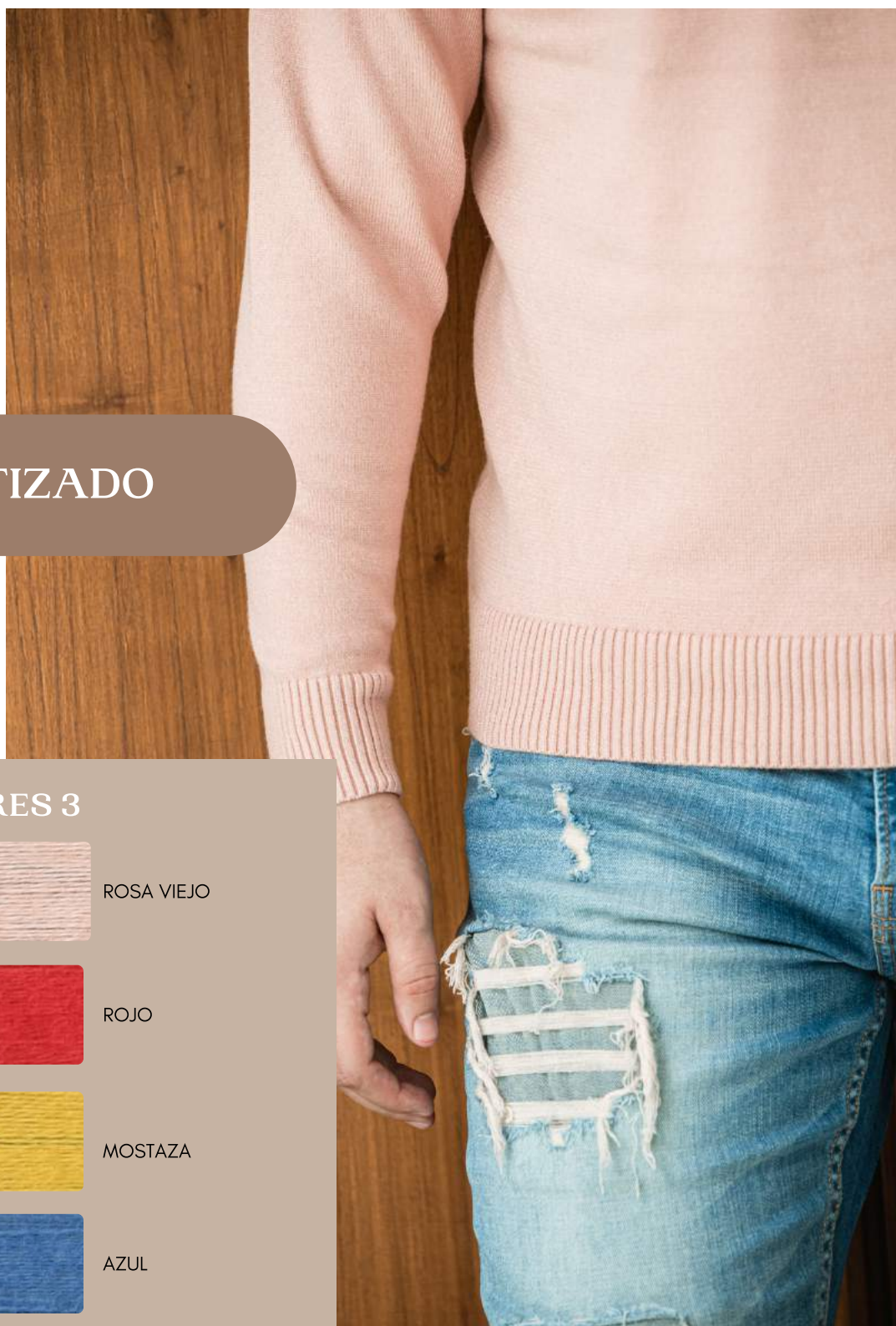
MOSTAZA



NEGRO



AZUL







ESCOTE V SIN MANGAS





**MUESTRA
TESTIGO A
ART: I21-5301SW**

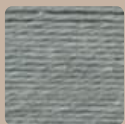
**Escote V sin
mangas**

FIBRA: ALGODÓN 100% PEINADO
DETALLE: COLORES LISOS
TEJIDO: JERSEY MENGUADO
FINURA:GG12
TEXTURA:FINA

**TALLES:
S-M-L-XL-XXL**



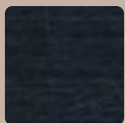
CARTA DE COLORES 1



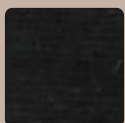
GRIS MEDIO 2815



BORDO 2328



MARINO 2550



NEGRO 2820





**MUESTRA
TESTIGO A
ART: I21-5302SW**

**Escote V sin
mangas**

FIBRA: ALGODÓN 100% PEINADO
DETALLE: COLORES MOULINADOS
TEJIDO: JERSEY MENGUADO
FINURA: GG12
TEXTURA: FINA

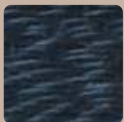
**TALLES:
S-M-L-XL-XXL**



CARTA DE COLORES 2



BEIGE 87056

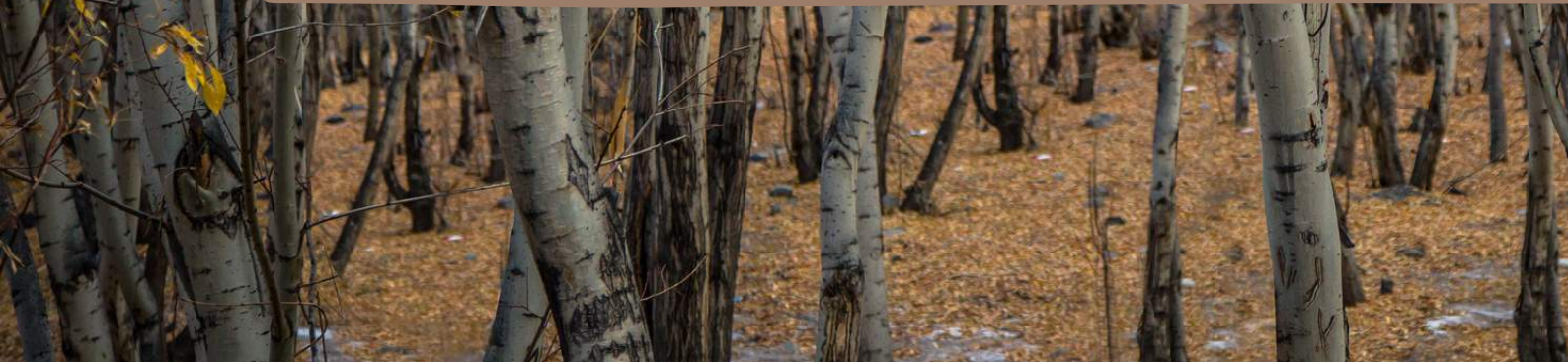


MARINO 82550



CARBON 82820







POLERAS





**MUESTRA
TESTIGO A
ART: I21-6401SW**

Polera

FIBRA: ALGODÓN 100% PEINADO
DETALLE: COLORES LISOS
TEJIDO: JERSEY MENGUADO
FINURA:GG12
TEXTURA:FINA

**TALLES:
S-M-L-XL-XXL**

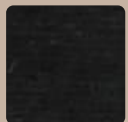


100% ALGODÓN

CARTA DE COLORES 1



AFRICA 2772



NEGRO 2820



**MUESTRA
TESTIGO E
ART: I21-6402SW**

Polera

FIBRA: ACRILICO 100% TRINITY
DETALLE: COLORES MOULINADOS
TEJIDO: JERSEY CON TRENZAS
MENGUADO
FINURA: GG8
TEXTURA: GRUESA

**TALLES:
S-M-L-XL-XXL**

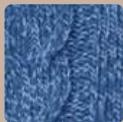




Harmont & Blaine
EST. 1983

TRENZADO

CARTA DE COLORES 5



JEAN 35



CARBON 30





MEDIO CIERRE





MUESTRA TESTIGO D
ART: I21-6601SW

Medio cierre con
coderas de gamuza

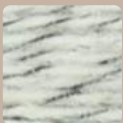
FIBRA: LANA 50%-ACRILICO 45%-
POLIAMIDA 5%
DETALLE: COLORES MOULINADOS
TEJIDO: JERSEY MENGUADO
FINURA: GG8
TEXTURA: GRUESA

TALLES:
S-M-L-XL-XXL



LANA 50%-ACRILICO 45%-
POLIAMIDA 5%

CARTA DE COLORES 4



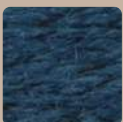
TIZA 1127



TERRACOTA 2011



PETROLEO 2476



AERO 1508





MUESTRA TESTIGO E
ART: I21-6602SW

Medio cierre con
tirilla de gamuza

FIBRA: ACRILICO 100% TRINITY
DETALLE: COLORES MOULINADOS
TEJIDO: JERSEY MENGUADO
FINURA: GG8
TEXTURA: GRUESA

TALLES:
S-M-L-XL-XXL



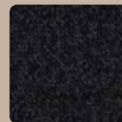


ACRILICO 100% TRINITY

CARTA DE COLORES 5



JEAN 35



CARBON 30



MUESTRA TESTIGO B
ART: I21-6603SW

Medio cierre

FIBRA: ALGODÓN 100% PEINADO
DETALLE: COLORES MOULINADOS
TEJIDO: JERSEY MENGUADO
FINURA: GG10
TEXTURA: MEDIA

TALLES:
S-M-L-XL-XXL



Harmont & Blaine
EST. 1983

100% ALGODÓN



CARTA DE COLORES 2



MARINO 82550

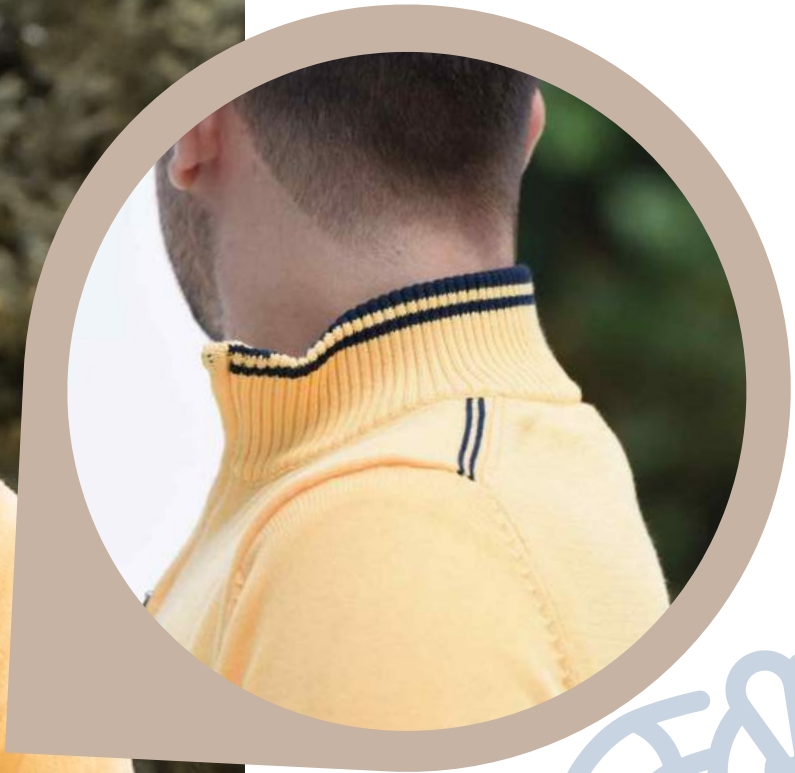


CARBON 82820



BORDO 84328



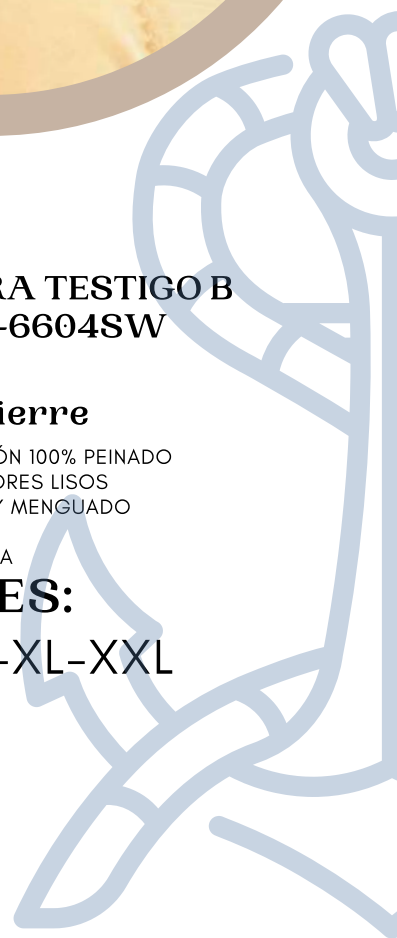


MUESTRA TESTIGO B
ART: I21-6604SW

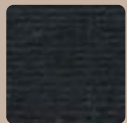
Medio cierre

FIBRA: ALGODÓN 100% PEINADO
DETALLE: COLORES LISOS
TEJIDO: JERSEY MENGUADO
FINURA: GG10
TEXTURA: MEDIA

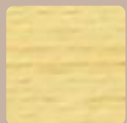
TALLES:
S-M-L-XL-XXL



CARTA DE COLORES 1



NAVAL 25011



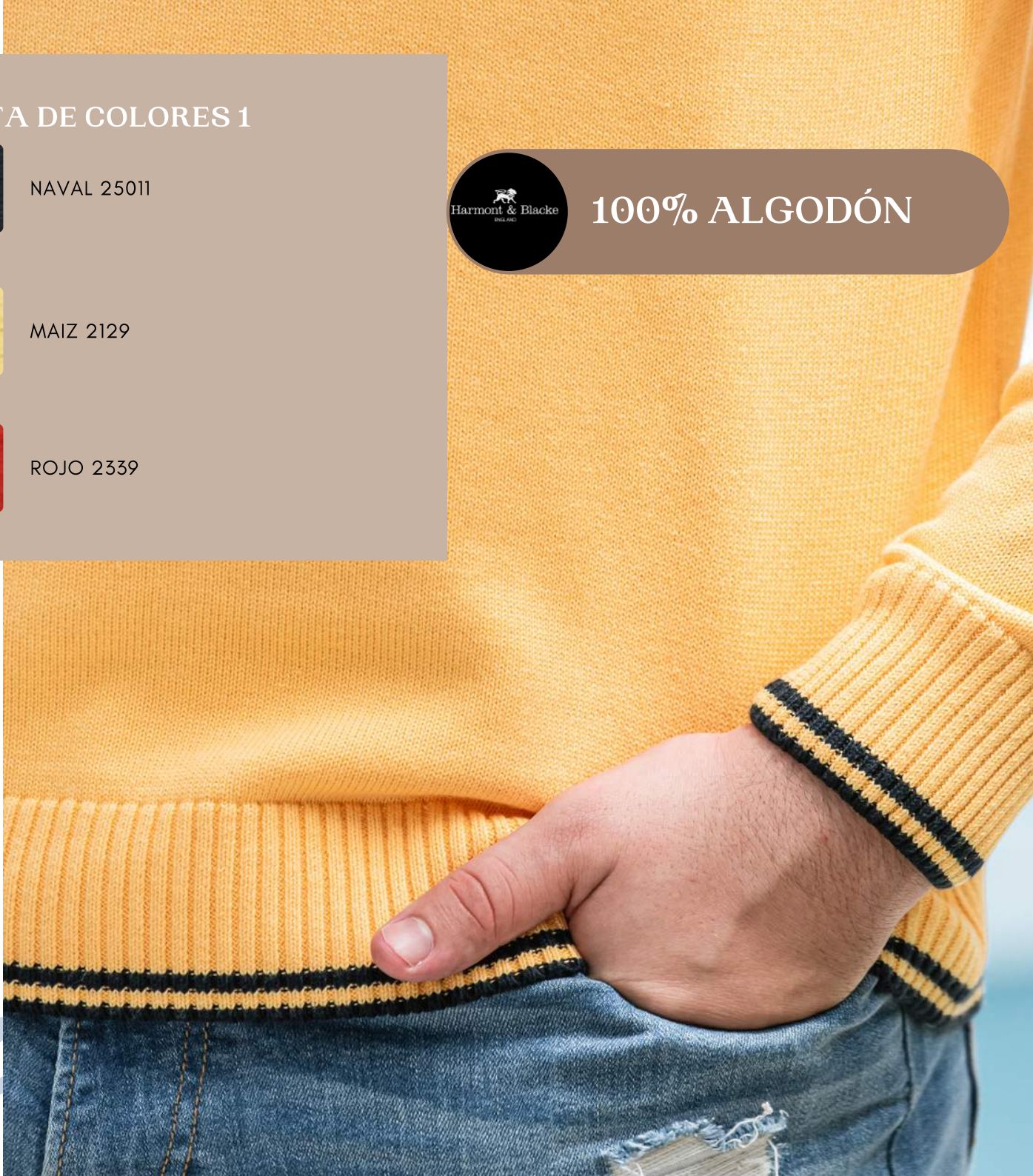
MAIZ 2129



ROJO 2339



100% ALGODÓN





MUESTRA TESTIGO B
ART: I21-6605SW

Medio cierre

FIBRA: ALGODÓN 100% PEINADO
DETALLE: COLORES LISOS
TEJIDO: JERSEY CORTADO
FINURA: GG10
TEXTURA: MEDIA

TALLES:

S-M-L-XL-XXL

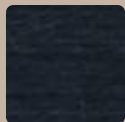




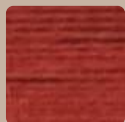
Harmont & Blaine
1984-2014

100% ALGODÓN

CARTA DE COLORES 1



MARINO 2550



CIRUELA 2320





MUESTRA TESTIGO B
ART: I21-6606SW

Medio cierre

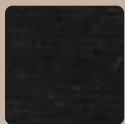
FIBRA: ALGODÓN 100% PEINADO
DETALLE: COLORES LISOS
TEJIDO: JERSEY MENGUADO
FINURA: GG10
TEXTURA: MEDIA

TALLES:
S-M-L-XL-XXL

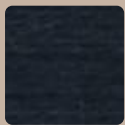
Harmont & Blaine
EST. 1962

100% ALGODÓN

CARTA DE COLORES 1



NEGRO 2820



MARINO 2550





**MUESTRA TESTIGO A
ART: I21-6607SW**

Medio cierre

FIBRA: ALGODÓN 100% PEINADO
DETALLE: COLORES BASE LISO Y
MOULINADO
TEJIDO: JERSEY MENGUADO
FINURA: GG12
TEXTURA: FINO

**TALLES:
S-M-L-XL-XXL**



CARTA DE
COLORES 1 / 2



GRIS CLARO 89038



NAVAL 25011





**MUESTRA TESTIGO A
ART: I21-6608SW**

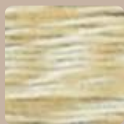
Medio cierre

FIBRA: ALGODÓN 100% PEINADO
DETALLE: COLORES BASE MOULINADO
TEJIDO: JERSEY MENGUADO INTARZIA
FINURA:GG12
TEXTURA: FINA

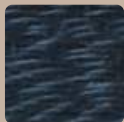
TALLES:
S-M-L-XL-XXL



CARTA DE COLORES 2



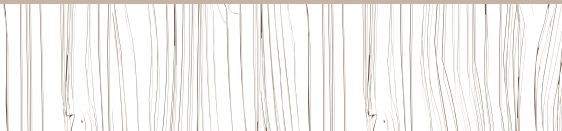
BEIGE 87056



MARINO 82550



CARBON 82820







SWEATERS CAMPERA





**MUESTRA
TESTIGO B
ART: I21-5701SW**

Campera

FIBRA: ALGODÓN 100% PEINADO
DETALLE: COLORES LISOS
TEJIDO: JERSEY MENGUADO
FINURA: GG10
TEXTURA: MEDIA

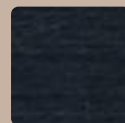
**TALLES:
S-M-L-XL-XXL**



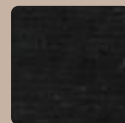
Harmont & Blaine
ENGLAND

100% ALGODÓN

CARTA DE COLORES 1



MARINO 2550



NEGRO 2820



BORDO 2328



**MUESTRA
TESTIGO B
ART: I21-5702SW**

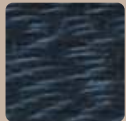
Campera

FIBRA: ALGODÓN 100% PEINADO
DETALLE: COLORES MOULINADOS
TEJIDO: JERSEY MENGUADO
FINURA: GG10
TEXTURA: MEDIA

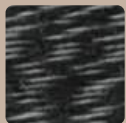
**TALLES:
S-M-L-XL-XXL**



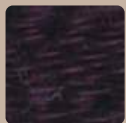
CARTA DE COLORES 2



MARINO 82550



CARBON 82820



OBISPO 87820



GRIS CLARO 89038



**MUESTRA TESTIGO D
ART: I21-6701SW**

**Campera con
coderas de gamuza**

FIBRA:LANA 50%-ACRILICO 45%-
POLIAMIDA 5%

DETALLE: COLORES MOULINADOS

TEJIDO: JERSEY MENGUADO

FINURA:GG8

TEXTURA: GRUESA

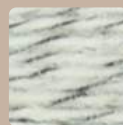
TALLES:

S-M-L-XL-XXL

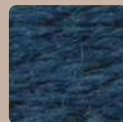


LANA 50%-ACRILICO 45%-
POLIAMIDA 5%

CARTA DE COLORES 4



TIZA 1127



AERO 1508



MUESTRA TESTIGO D
ART: I21-6702SW

Campera

FIBRA:LANA 50%-ACRILICO 45%-
POLIAMIDA 5%
DETALLE: COLORES MOULINADOS
TEJIDO: JERSEY CON TRENZAS
MENGUADO
FINURA:GG8
TEXTURA: GRUESA

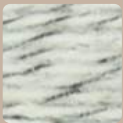
TALLES:
S-M-L-XL-XXL



Harmont & Blaine
ENGLAND

TRENZADO

CARTA DE COLORES 4



TIZA 1127



NAVY 171218



MUESTRA TESTIGO B
ART: I21-6703SW

**Campera con
coderas de gamuza**

FIBRA:ALGODÓN 100% PEINADO
DETALLE: COLORES MOULINADOS
TEJIDO: JERSEY MENGUADO
FINURA:GG10
TEXTURA: MEDIA

TALLES:
S-M-L-XL-XXL





100% ALGODÓN

CARTA DE COLORES 2



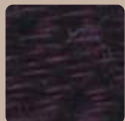
MARINO 82550



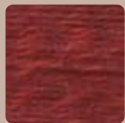
CARBON 82820



BEIGE 87056



OBISPO 87820



BORDÓ 84328





MUESTRA TESTIGO E
ART: I21-6704SW

Campera con tirilla
de gamuza

FIBRA: ACRILICO 100% TRINITY
DETALLE: COLORES MOULINADOS
TEJIDO: JERSEY MENGUADO
FINURA: GG8
TEXTURA: GRUESA

TALLES:
S-M-L-XL-XXL



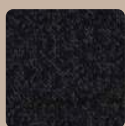
Harmont & Blaine
ENGLAND

COLORES MOULINADOS

CARTA DE COLORES 5



JEAN 35



CARBON 30







ACCESORIOS





MUESTRA TESTIGO J
ART: I21-145AC

Bufanda trenzada

FIBRA:LANA 50%-ACRILICO 45%-
POLIAMIDA 5%
DETALLE: COLORES MOULINADOS
TEJIDO: TRENZADO
FINURA:GG8
TEXTURA: GRUESA

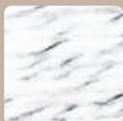


Harmont & Blaque
ENGLAND

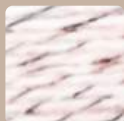
LANA 50%-ACRILICO 45%-
POLIAMIDA 5%



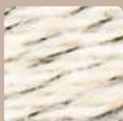
CARTA DE COLORES 10



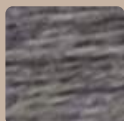
TIZA 1127



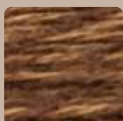
ROSA 2009



ARENA 1501



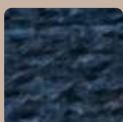
UVA 13849



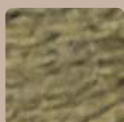
CHOCOLATE



CARBON 12692



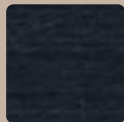
NAVY 171218



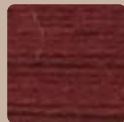
MUSGO 13847



CARTA DE COLORES 1



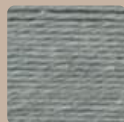
MARINO 2550



BORDÓ 2328



NEGRO 2820



GRIS 2815

ART: TP-153AC

Zapatillas

FIBRA: POLIESTER-ELASTOMERO

DETALLE: COLORES LISOS

TEJIDO: PUNTO

FINURA:GG12

TEXTURA: ULTRA LIVIANA

TALLES:

39, 40, 41, 42, 43, 44,

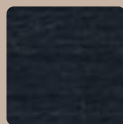
TAREA:

1 2. 3 3 2 1





CARTA DE COLORES 1



MARINO 2550



NEGRO 2820

ART: TP-154AG Zapatillas

FIBRA: POLIESTER-ELASTOMERO
DETALLE: FANTASIA RAYADA
TEJIDO: PUNTO
FINURA: GG12
TEXTURA: ULTRA LIVIANA

TALLES:

39, 40, 41, 42, 43, 44,

TAREA:

1 2 3 3 2 1





Harmont & Blacke

ENGLAND



INGRESÁ
A NUESTRA WEB

Ruta 24 número 6502
CP 1744
Cuartel V Moreno
Parque Industrial Moreno 1 Parcela 44
Casilla de correo número 2
Sucursal: Moreno
Teléfono: +54 9 11 5365-8754
WhatsApp: +54 9 11 6392-4267